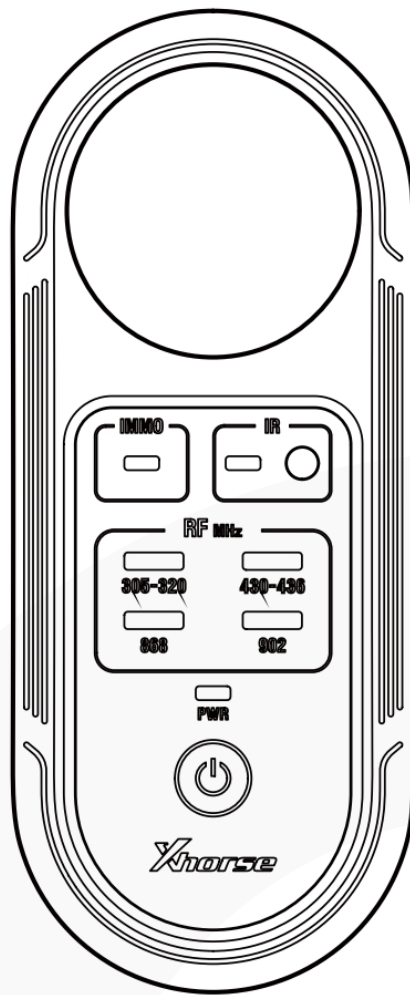


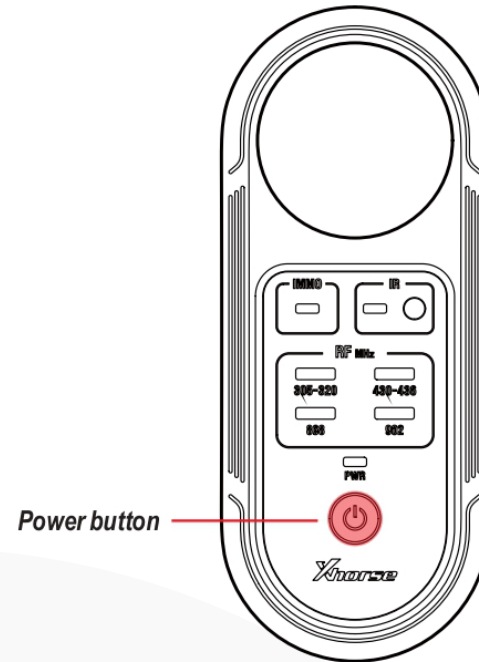
Xhorse® REMOTE TESTER User Manual



Scan QR Code to download
Xhorse APP



Power on/off and instructions for use:



Power on: Keep press the power button to turn on the device.
Power off: Keep, press the power button to turn off the device.
Automatic shutdown: In order to improve the battery service time, the device will automatically power off after about half a minute each time.

Device parameters and specifications

Input power	3V DC
Standby current	12mA
Frequency signal detection range	About 10cm(related to key signal strength)

*Battery specifications: 2# 7 batteries.

Panel instructions:



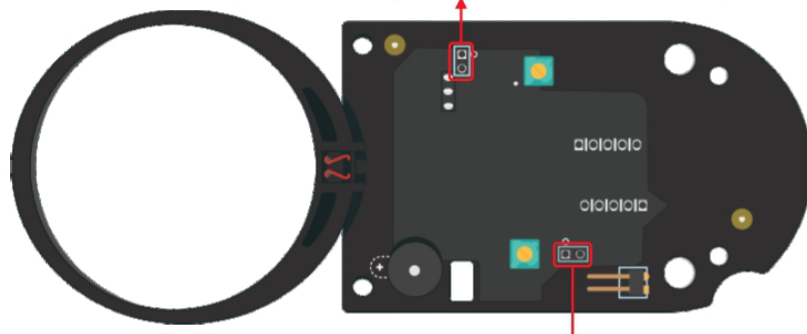
- ① **【Power button】** : used for power on and off.
- ② **【PWR】** Indicator light: when the tester is turned on, the indicator will turn on.
- ③ **【305-320】** Indicator light: frequency signal indicator light, which is on when the signal frequency range is within 305MHz-320MHz.
- ④ **【430-436】** Indicator light: frequency signal indicator light, which is on when the signal frequency range is within 430MHz-436MHz.

- ⑤ **【868】** Indicator light: frequency signal indicator light, which is on when the signal frequency is 868MHz.
- ⑥ **【902】** Indicator light: frequency signal indicator light, which is on when the signal frequency is 902MHz.
- ⑦ **【IMMO】** Indicator light: ignition coil signal indicator, which is on when there is a signal. (As show in Figure 1)
- ⑧ **【IR】** Indicator light: the indicator light is on when IR signal is detected. (As show in Figure 2)
- ⑨ **【Infrared signal receiver】** : it is used to receive infrared signals. During detection, the Mercedes Benz key needs to be vertically aimed at the receiver, and the indicator light will be on when the signal is detected.
- ⑩ **【Battery cover】** : the battery cover can be pushed to replace the battery.

Instructions for using the band jumper :

Note: After the device is turned on, if the 868 or 902 signal lights are flashing or on all the time, it means that there is local frequency interference. Please block the 868 and 902 frequency measurement functions according to the following figure.

When the 902 frequency band is disturbed, remove the jumper .



When the 868 frequency band is disturbed, remove the jumper .

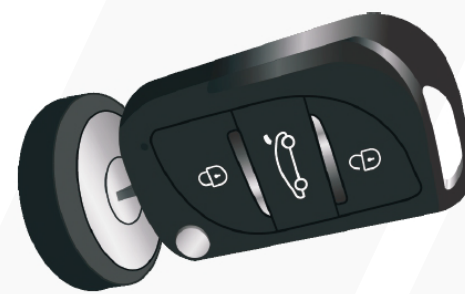


Figure 1:IMMO signal test



Figure 2:Infrared signal test